

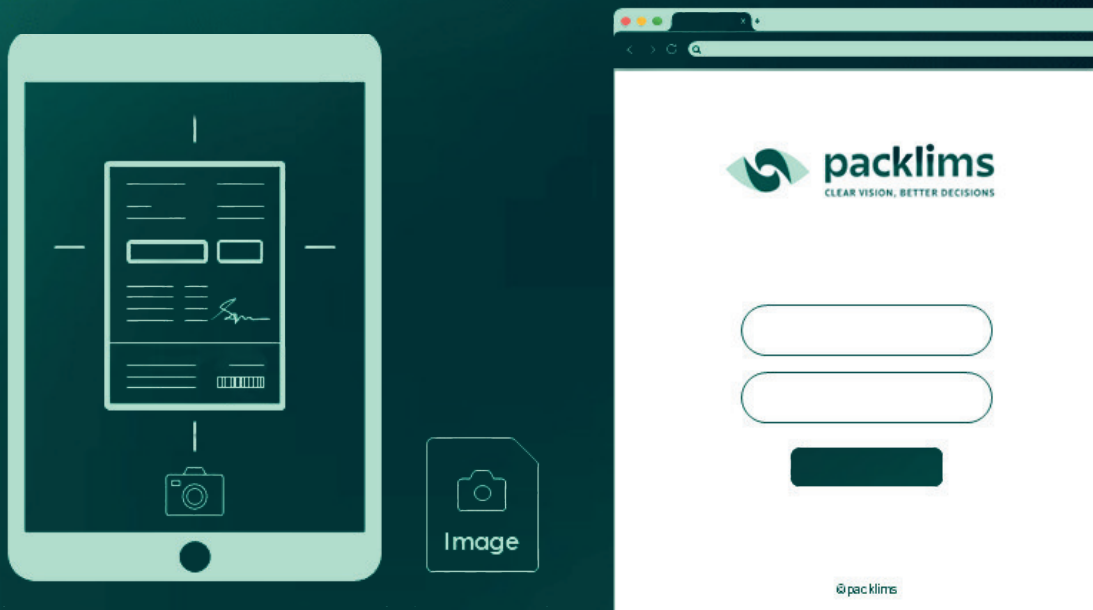


packlims

CLEAR VISION, BETTER DECISIONS

PACKAGING LAB LIMS SYSTEM

Re-imagining data capture & dramatically improving testing efficiency

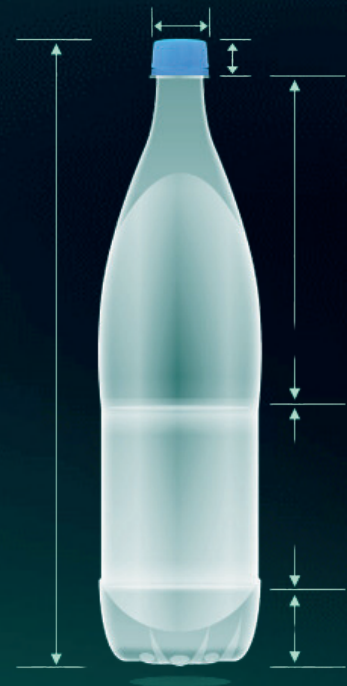
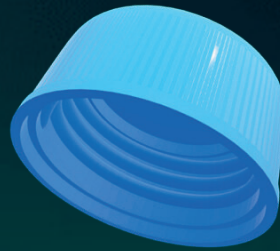


WHAT IS PACKLIMS?

packlims is a software-based laboratory information management system (LIMS) enabling secure, automated, and scalable tracking and information management.

Designed with & for laboratories

packlims is designed with and for laboratories who need or want to update their existing Laboratory Information Management System



Re-imagine Data Capture

A unique iDOC solution that can capture data from all types of equipment, removing the need for manual transcription.

CAPTURE

Mobile Device + iDOC



Device
Method Specific

OUTPUT
Method Specific

TESTING

Job: Demo Test	Added by: Derek O'Herlihy Date added: 15/10/2024 Due date: 12/11/2024	Number of Samples: 72 Sample type: Demo Test sample Job Profile Name: PET CSD Full Profile
PET Dimensions Empty	100% complete	✓
PET Thermal Stability	100% complete	✓
PET Wall Thickness 17 Points	100% complete	✓
PET Thermal Stability AXL	100% complete	✓
PET Drop Test Horizontal	100% complete	✗
PET Drop Test Vertical	100% complete	✗



Workflow Benefits

Track and store information about a sample from the time it enters a lab until it has undergone processing and reporting.

CAPTURE

Mobile Device + IDOC



Interval
Test Specific

SAMPLE

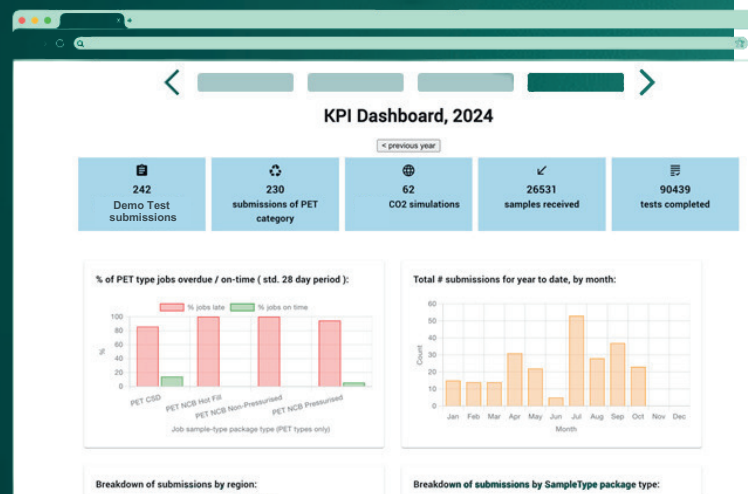
Image

CYCLE
Test Specific

Device
Method Specific

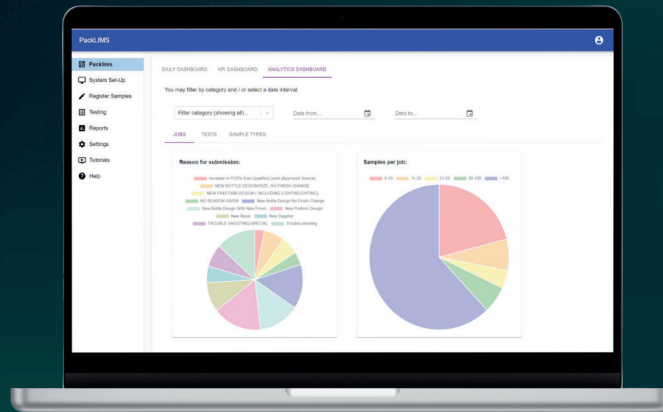
OUTPUT
Method Specific

REPORTING



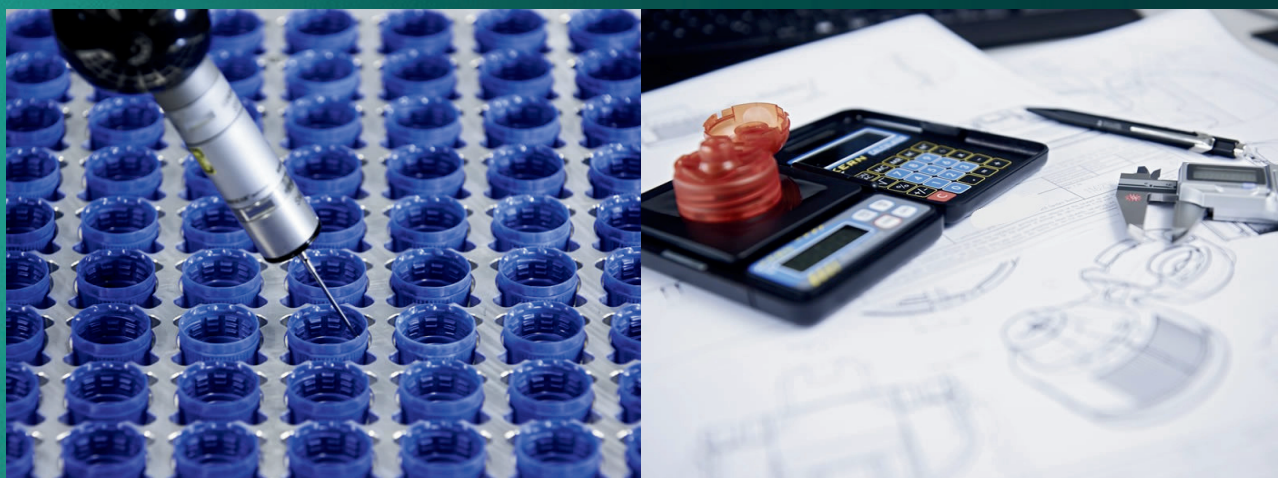
Reduce Human Error

Enable workflow automation which can in turn reduce human error. Integrate with instruments or other in-lab systems to improve lab efficiency.



packlims helps ensure that packaging meets the highest standards while enabling data-driven decisions.

For packaging manufacturers and laboratories, the packlims solution improves efficiency by helping to streamline the workflow, reducing the risk of errors and accelerating the speed to market.





 **GET IN TOUCH**

derekoherlihy@coolharbor.ie

+353 (0)85 729 4944

